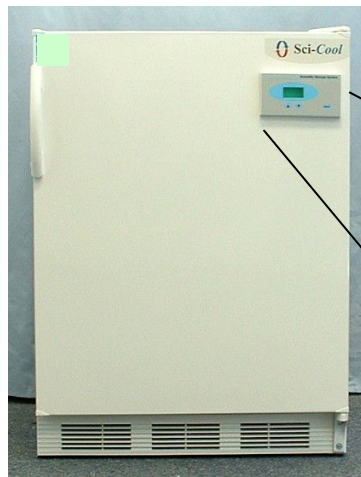


Sci-Cool, Inc.



Model BI604AREF



+4°C Laboratory Refrigerator



Sci-Cool's space-saving, high-efficiency laboratory refrigerator is ideal for zero-clearance, built-in applications due to its forced air ventilation system. It can also be installed as free standing beside the work bench or under counter. The refrigerator's temperature control offers a microprocessor based system with a digital temperature set-point and display to 0.1° C resolution. This model comes standard with a built-in temperature alarm system that alerts the operator to temperature deviation by monitoring user adjustable high and low temperature limits and has both an audible and visual warning system which includes remote dry contacts for remote alarm condition monitoring. This model carries a commercial rating and is manufactured to endure the rigors of commercial laboratory use and carries a warranty for this application. This state-of-the-art laboratory refrigerator employs the latest in insulating and refrigeration technologies for improved temperature stability and reduced energy consumption. A full-coverage internal rear evaporative cooling panel is utilized to ensure optimum temperature uniformity and recovery. For performance assurance, each unit is completely tested and shipped with its unique pull down performance graph. The exterior is constructed of heavy gauge steel with a baked-on white epoxy coating for long lasting durability. The interior is white heavy gauge molded ABS with no seams for easy cleaning and decontamination. The interior environment is protected by CFC-free, high-density foamed-in-place urethane insulation for optimum temperature stability. Additional standard features include adjustable white epoxy coated shelves, a reversible outer door, a high efficiency refrigeration system for reduced operating costs, a manually operated interior light and adjustable leveling legs.

Specifications:

Temperature Range Chamber +1° to +10° C (34° to 50° F), Average temperature uniformity better than +/-1C in product @ +4° C

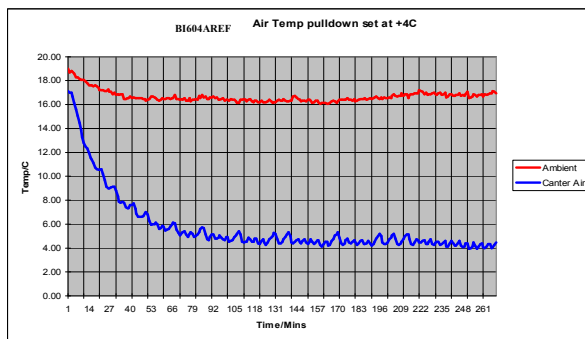
Dimensions Exterior 23.7" W(60.2 cm) x 23.5" D(59.69 cm) x 33.5" H(85.1 cm)
Interior 20.8" W(52.71 cm) x 18.8" D(47.63 cm) x 27" H(68.58 cm)

Capacity 6.1 cu. ft., 150.1 liters

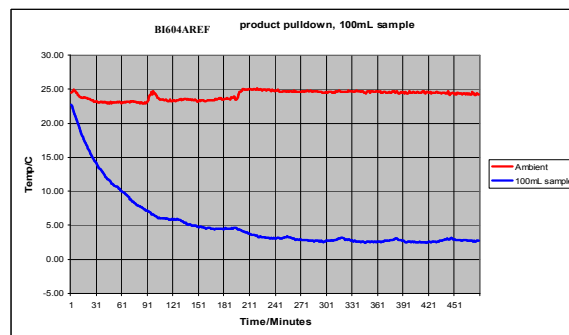
Electrical 115VAC, 60 Hz, 1-phase, 1.3 amps

Net weight 101 lbs., 45.8 kg

Shipping weight 112 lbs., 50.8 kg



Typical performance characteristic, unloaded



Typical performance characteristic, with load