

Sci-Cool, Inc.



Lab Refrigerator shown

Models GP06W1AREF +4° C Laboratory Refrigerator and GP06W1AF -30° C Freezer

Sci-Cool's space-saving +4C refrigerator and -30C freezer are ideal for zero-clearance, built-in applications due to their forced air ventilation system. It can also be installed as free standing beside the work bench or under counter. These models carry a commercial rating for general laboratory use. The refrigerator and freezer utilize proven technology used in the appliance industry, but are manufactured to endure the rigors of commercial laboratory use and carry a warranty for this application. The operating temperature is extremely stable and recovery after door openings is unparalleled to protect valuable samples. This is accomplished through the use of a full-coverage evaporative cooling panel. This type cooling system eliminates the need for internal fans which cause vibration and increase sample evaporation. Expected temperature uniformity at +4° C is around +/-0.3° C depending on product loading. For performance assurance, each unit is completely tested and shipped with its unique pull down performance graph. The exterior is constructed of heavy gauge steel with a baked-on epoxy coating for long lasting durability. The interior is white heavy gauge molded ABS with no seams for easy cleaning and decontamination. The interior environment is protected by CFC-free, high-density foamed-in-place urethane insulation for optimum temperature stability. The insulated outer door is made of powder coated steel with a flat molded ABS liner for improved interior storage space. Additional standard features include white epoxy coated shelves, reversible outer doors, high efficiency refrigeration systems for reduced operating costs, and adjustable leveling legs. Freezer model includes three removable temperature isolation racks/bins for additional temperature stability during door openings.

Specifications:

Temperature Range Refrigerator (shown) +1° C to +14° C (34° F to 57° F)
Freezer model -30° C to -15° C (-22° F to +5° F)

Dimensions Exterior 23.7" W(60.2 cm) x 23.5" D(59.69 cm) x 33.5" H(85.1 cm)
Interior 20.8" W(52.71 cm) x 18.8" D(47.63 cm) x 27" H(68.58 cm)

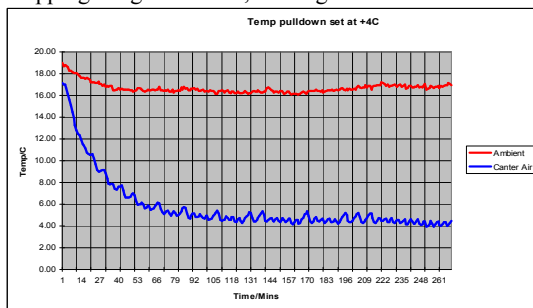
Time of order options available; Refrigerator- built-in door lock and glass door, Freezer- built-in door lock

Capacity 6.1 cu. ft., 150.1 liters

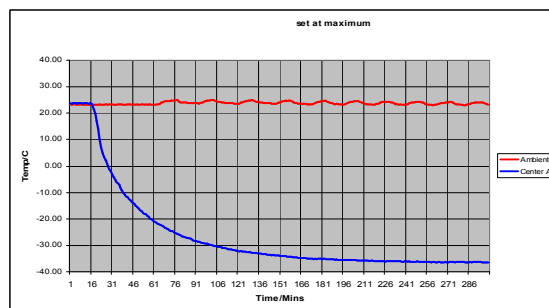
Electrical 115VAC, 60 Hz, 1-phase, 1.3 amps

Net weight 101 lbs., 45.8 kg

Shipping weight 112 lbs., 50.8 kg



Typical performance characteristic, refrigerator unloaded



Typical performance characteristic, freezer unloaded