

Sci-Cool, Inc.



Model GP21W1AM



Freezer/Refrigerator

Sci-Cool's space-saving floor model two door freezer/refrigerator is ideal for placement as free standing beside the work bench and only requires 7.2 sq. ft. of floor space. This model carries a commercial rating for general laboratory use. This product utilizes proven technology used in the household appliance industry, but is manufactured to endure the rigors of commercial laboratory use and carries a warranty for this application. For enhanced performance, this model has separate temperature controls for both the freezer and refrigerator compartments. Adding to this model's flexibility, it has user selectable defrost systems. The unit can operate in either manual or automatic defrost modes. For performance assurance, each unit is completely tested and shipped with its unique pull down performance graph. The exterior is constructed of heavy gauge steel with a baked-on white epoxy coating for long lasting durability and scratch resistance. The interior is white, corrosion resistant, molded ABS with no seams for easy cleaning and decontamination. The interior environment is protected by CFC-free, high-density foamed-in-place urethane insulation. This model has an isolated freezing compartment with separate access door. The freezer inventory environment includes one wire shelf plus its floor for product storage. The refrigerator inventory environment includes two main compartment adjustable wire shelves and one solid, fixed-position glass shelf. There are also two lower compartment bins and three shelves on the door for additional storage capacity and flexibility. Other features include reversible outer doors for location flexibility, an internal light and adjustable leveling legs.

Specifications:

Temperature Range Refrigerator -2° to 7° C (28.4° to 41° F)
 Freezer -25° to -15° C (-7.6° to 23° F)

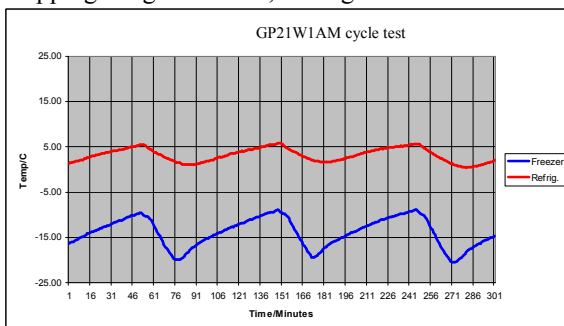
Dimensions Exterior 31.3" W(79.5 cm) x 33" D(83.8 cm) x 66.9" H(169.9 cm)
 Interior Refrig. 28.6"W(72.6 cm) x 22.1"D(56.1 cm) x 38.2"H(97 cm)
 Freezer 28.6"W(72.6 cm) x 22.1"D(56.1 cm) x 18.2"H(46.2 cm)

Capacity 20.7 cu. ft., 509 liters, Refrig. 14 cu. ft., Freezer 6.7 cu. ft

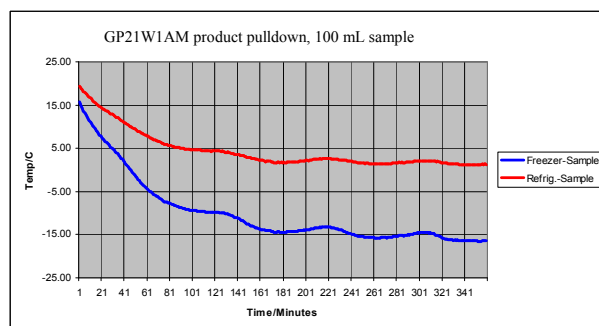
Electrical 115VAC, 60Hz, 10phase, 4.5 Amps

Net weight 250 lbs., 113.4 kg

Shipping weight 280 lbs., 127 kg



Typical cycle performance characteristic



Typical load pull down characteristic