

# Sci-Cool, Inc.



**Model GP26W1AREF**



**All Refrigerator**



Sci-Cool's space-saving upright refrigerator model is ideal for placement beside the work bench, requiring only 8.3 sq. ft. of floor space. This model carries a commercial rating for general laboratory use and comes standard with an automatic defrost system that defrosts the cabinet every twelve hours when the unit is operating at temperatures at or below 0° C. This product utilizes proven technology used in the household appliance industry, but is manufactured to endure the rigors of commercial laboratory use and carries a warranty for this application. For performance assurance, each unit is completely tested and shipped with its unique pull down performance graph. The exterior is constructed of heavy gauge steel with a baked-on white epoxy coating for long lasting durability and scratch resistance. The interior is white molded ABS with no seams for easy cleaning and decontamination. The interior environment is protected by CFC-free, high density foamed-in-place urethane insulation. Additional standard features include four fixed, removable epoxy coated shelves, two removable wire baskets for large item storage and six shelves on the door, an interior light, adjustable temperature control, built-in door lock, internal floor drain and adjustable leveling legs.

## Specifications

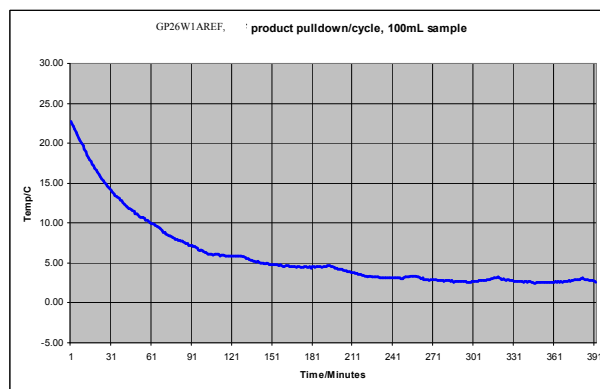
Temperature Range Refrigerator -6° to +8° C (21° to 46° F)  
Average temperature uniformity better than +/-0.75 in product @ +4° C

Dimensions Exterior 36" W(91.44 cm) x 33" D(83.82 cm) x 68" H(172.72 cm)  
Interior 30" W(76.2 cm) x 27" D(68.58 cm) x 59" H(149.86 cm)

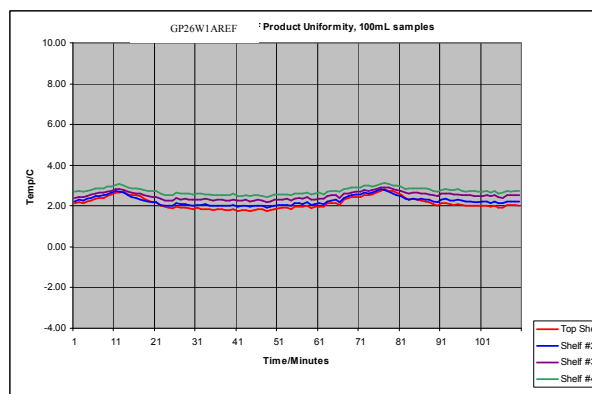
Capacity 25.7 cu. ft., 632.3 liters

Net weight 220 lbs., 99.8 kg

Shipping weight 260 lbs., 117.9 kg



Typical performance ambient pull-down



Typical performance, product uniformity