

# Sci-Cool, Inc.

Shown with optional factory installed chart recorder

Door shelves not as shown



**Model SCEF21OW1A**

**-30° C Enzyme Storage Freezer**

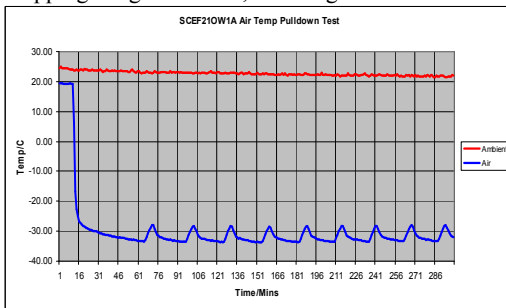
Sci-Cool's space-saving high performance enzyme storage freezer is ideal for placement beside the work bench, requiring only 6.4 sq. ft. of floor space. The freezer's temperature control offers a microprocessor based system with a digital temperature set-point and display. This model comes standard with a built-in temperature alarm system that alerts the operator to temperature deviation by monitoring user adjustable high and low temperature limits and has both an audible and visual warning system which includes remote dry contacts for remote alarm condition monitoring. Included with this model as a standard feature is a data acquisition system complete with operating software and interconnect cables. This model carries a commercial rating for general laboratory use and comes standard with a manual defrost system to insure temperature stability and product integrity. This state-of-the-art laboratory freezer employs the latest in insulating and refrigeration technologies for improved temperature stability and reduced energy consumption. It utilizes a dynamic-convection temperature conditioning system to provide an optimal internal temperature pattern with no fans or blowers. For performance assurance, each unit is completely tested and shipped with its unique pull down performance graph. The exterior is constructed of heavy gauge steel with a baked-on white epoxy coating for long lasting durability and scratch resistance. The interior is white molded ABS with no seams for easy cleaning and decontamination. The interior environment is protected by CFC-free, high-density foamed-in-place urethane insulation. This model comes standard with a stainless steel inventory system designed to maximize storage space while maintaining easy access to stored items. The inventory system includes 36 independent slide out/removable drawers. Additional standard features include four fixed refrigerated shelves, a removable wire basket at the floor level and two full shelves and five half shelves on the door, an interior light, internal floor drain and adjustable leveling legs.

## Specifications

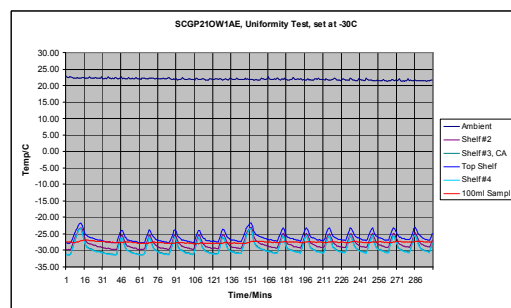
Temperature Range -32° to -12° C (-25.6° to 10° F), Temperature Uniformity better than +/-2.5° C in product

Dimensions Exterior 33" W(83.82 cm) x 30.5" D(77.47 cm) x 66" H(167.64 cm)  
Interior 27.6" W(70.1 cm) x 22.8" D(57.91 cm) x 56.8" H(144.27 cm)

Capacity 20 cu. ft., 492.1 liters  
Net weight 278 lbs., 126.1 kg  
Shipping weight 350 lbs., 158.8 kg



Typical performance air temp pull-down



Typical temperature uniformity pattern