

Sci-Cool, Inc.



Model SCGP02OW1AB Freezer/Refrigerator

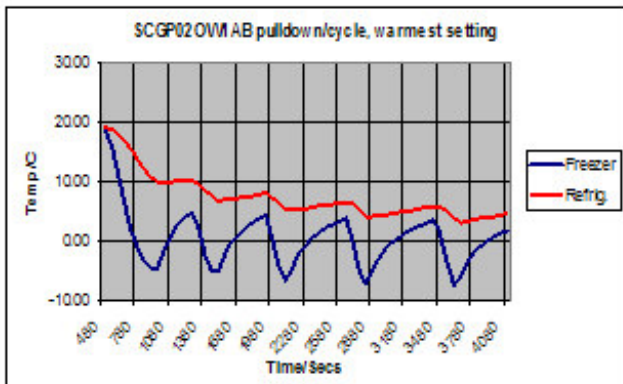
Sci-Cool's space-saving counter top freezer/refrigerator model is ideal for placement on the work bench, with the features and convenience of our larger models. This model carries a commercial rating for general laboratory use and comes standard with a manual defrost system that allows you to select the appropriate time for the system to be engaged, unlike auto-defrost models that work on a timer sequence. This product utilizes proven technology used in the household appliance industry, but is manufactured to endure the rigors of commercial laboratory use and carries a warranty for this application. For performance assurance, each unit is completely tested and shipped with its unique pull down performance graph. The exterior is constructed of heavy gauge steel with a baked-on white epoxy coating for long lasting durability. The interior is white molded ABS with no seams for easy cleaning and decontamination. The interior environment is protected by CFC-free, high-density foamed-in-place urethane insulation. Other features include an internal freezing compartment with self-closing door and a removable half-shelf in the refrigerator compartment. There are also two shelves located on the door.

Specifications:

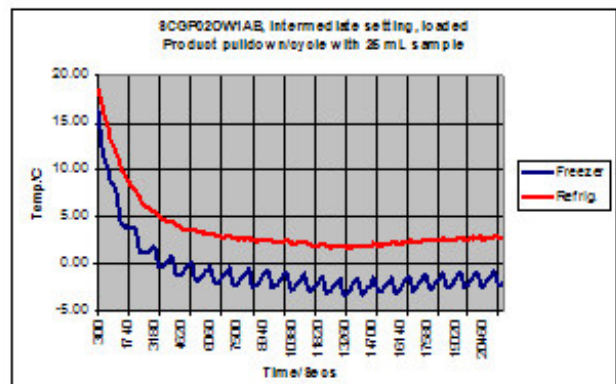
Temperature Range Refrigerator -10° to 5° C (14° to 41° F)
 Freezer -20° to 0° C (-4° to 32° F)

Dimensions Exterior 19.5" W(49.53 cm) x 19.7" D(50.04 cm) x 20.6" H(52.32 cm)
 Interior 16.7" W(42.42 cm) x 14.5" D(36.83 cm) x 15.9" H(40.39 cm)

Capacity 1.8 cu. ft. 44.3 liters
 Net weight 48.2 lbs. 21.86 kg.
 Shipping weight 55.1 lbs. 24.99 kg.



Typical performance characteristic, unloaded



Typical performance characteristic, with load