

Sci-Cool, Inc.



Model SCGP04OW1AB

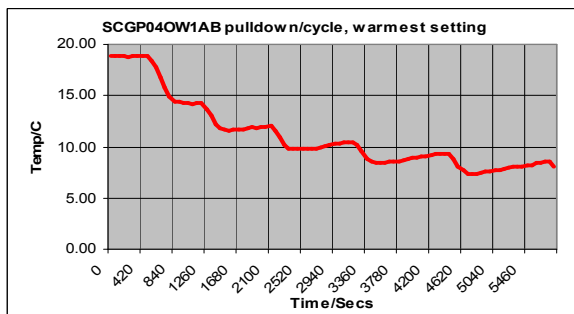


All Refrigerator

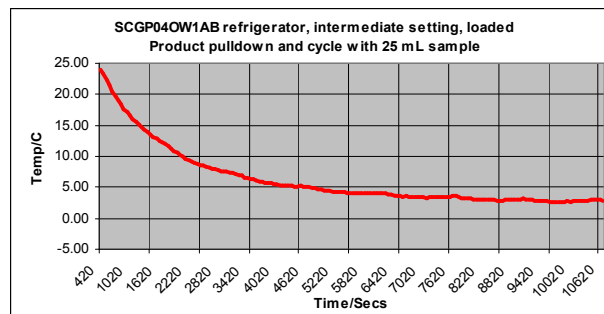
Sci-Cool's space-saving under-counter refrigerator model is ideal for placement as free standing beside the work bench or under-counter, with the features and convenience of our full-size models. This model carries a commercial rating for general laboratory use. This product utilizes proven technology used in the household appliance industry, but is manufactured to endure the rigors of commercial laboratory use and carries a warranty for this application. For performance assurance, each unit is completely tested and shipped with its unique pull down performance graph. The exterior is constructed of heavy gauge steel with a baked-on white epoxy coating for long lasting durability. The interior is white molded ABS with no seams for easy cleaning and decontamination. The interior environment is protected by CFC-free, high-density foamed-in-place urethane insulation. This model series has a built-in security hasp lock provided. The internal inventory environment includes two adjustable cantilevered wire shelves, one fixed-position, removable wire shelf, and two door shelves for additional storage capacity. Additional features include a factory reversible outer door, an internal light and adjustable leveling legs.

Specifications:

- Temperature Range Refrigerator 0° to 9° C (32° to 48.2° F)
- Dimensions Exterior 19.5" W(49.53 cm) x 19.7" D(50.04 cm) x 33.8" H(85.09 cm)
 Interior 16.8" W(42.67 cm) x 15" D(38.1 cm) x 29.4" H(74.68 cm)
- Capacity 4.2 cu. ft. 103.3 liters
- Net weight 73 lbs. 33.1 kg.
- Shipping weight 82 lbs, 37.2 kg.



Typical performance characteristic, unloaded



Typical performance characteristic with load