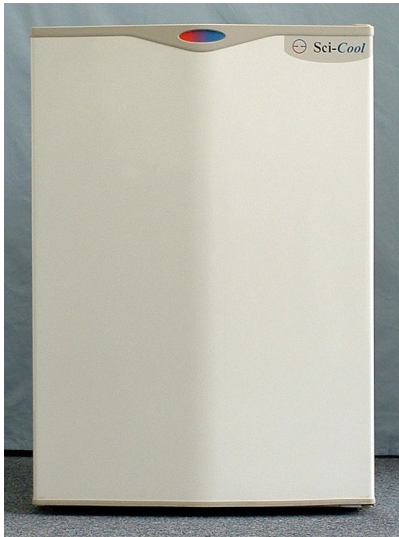


# Sci-Cool, Inc.



**Model SCGP06OW1AB**

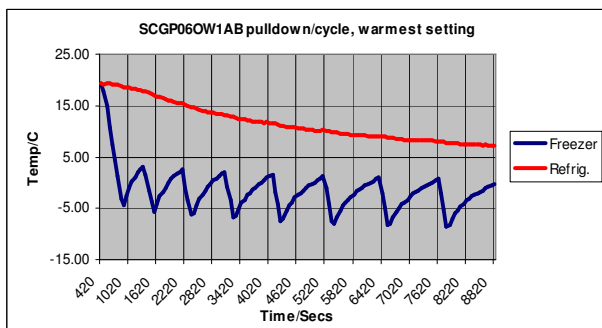


**Freezer/Refrigerator**

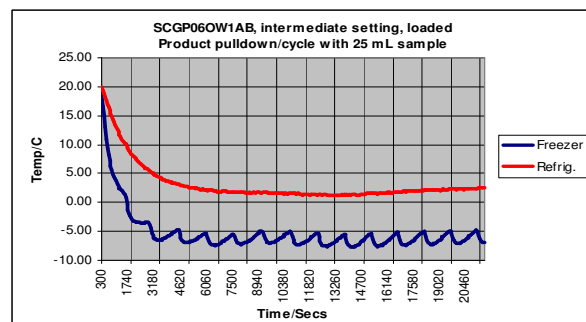
Sci-Cool's space-saving under-counter freezer/refrigerator model is ideal for placement as free standing beside the work bench or under-counter, with the features and convenience of our full-size models. This model carries a commercial rating for general laboratory use and comes standard with our unique push-button, manual defrost system that allows you to select the appropriate time for the system to be engaged, unlike auto-defrost models that work on a timer sequence. Additionally, this unique type of defrost system does not require the temperature control to be turned off (losing your previous setting) or the unit to be unplugged. This product utilizes proven technology used in the household appliance industry, but is manufactured to endure the rigors of commercial laboratory use and carries a warranty for this application. For performance assurance, each unit is completely tested and shipped with its unique pull down performance graph. The exterior is constructed of heavy gauge steel with a baked-on white epoxy coating for long lasting durability. The interior is white molded ABS with no seams for easy cleaning and decontamination. The interior environment is protected by CFC-free, high-density foamed-in-place urethane insulation. Other features include an interior light, an internal freezing compartment with self-closing door, adjustable leveling legs, three removable glass half shelves ideal for use in storing tall containers, two removable storage bins and three adjustable door shelves in the refrigerator compartment.

**Specifications:**

- Temperature Range Refrigerator -3° to 7° C (26.6° to 44.6° F)  
Freezer -22° to -4° C (-7.6° to 24.8° F)
- Dimensions Exterior 23.5" W(59.69 cm) x 24.9" D(63.25 cm) x 33.8" H(85.85 cm)  
Interior 21.2" W(53.85 cm) x 18" D(45.72 cm) x 28.8" H(73.15 cm)
- Capacity 5.8 cu. ft. 142.7 liters
- Net weight 99 lbs. 44.9 kg.
- Shipping weight 108 lbs. 48.99 kg.



Typical performance characteristic, unloaded



Typical performance characteristic, with load