

Sci-Cool, Inc.



Model SCGP11OW1AB All Refrigerator

Sci-Cool's space-saving floor model refrigerator is ideal for placement as free standing beside the work bench. This model only requires 3.9 sq. ft. of floor space. This model carries a commercial rating for general laboratory use. This product utilizes proven technology used in the household appliance industry, but is manufactured to endure the rigors of commercial laboratory use and carries a warranty for this application. For performance assurance, each unit is completely tested and shipped with its unique pull down performance graph. The exterior is constructed of heavy gauge steel with a baked-on white epoxy coating for long lasting durability. The interior is white molded ABS with no seams for easy cleaning and decontamination. The interior environment is protected by CFC-free, high-density foamed-in-place urethane insulation. The internal inventory environment includes four main compartment adjustable wire shelves and one solid, fixed-position shelf. There are also two lower compartment bins, eight shelves on the door, five of which are adjustable for additional storage capacity and flexibility. Other features also include a reversible outer door, an internal light and adjustable leveling legs.

Specifications:

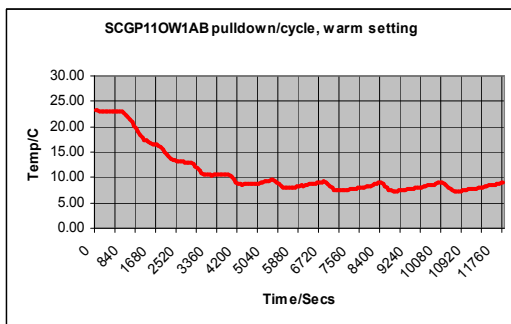
Temperature Range Refrigerator 1° to 10° C (33.8° to 50° F)

Dimensions Exterior 23.5" W(59.69 cm) x 24" D(60.96 cm) x 59" H(149.86 cm)
Interior 20.7" W(52.58 cm) x 18.8" D(47.75 cm) x 52.4" H(133.1 cm)

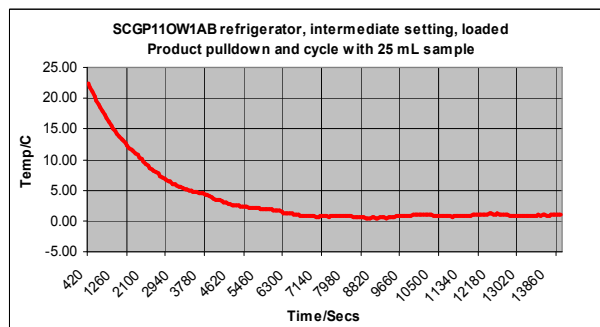
Capacity 11.2 cu. ft., 275.6 liters

Net weight 134 lbs., 60.78 kg

Shipping weight 148 lbs., 67.13 kg



Typical performance characteristic, unloaded



Typical performance characteristic with load