

Sci-Cool, Inc.



Model SCGP13OW1AB

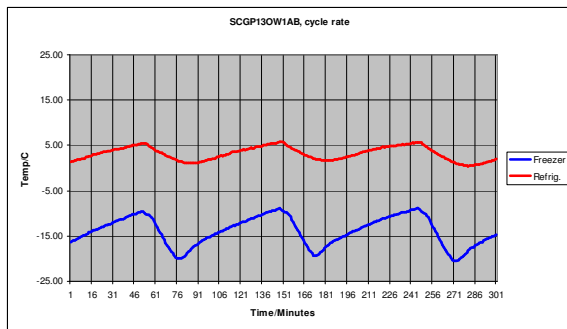


Freezer/Refrigerator

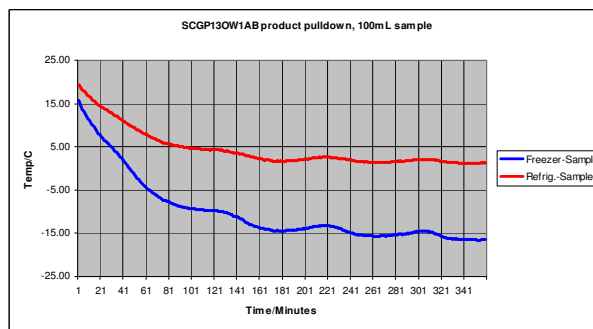
Sci-Cool's space-saving floor model two door freezer/refrigerator is ideal for placement as free standing beside the work bench and only requires 4.7 sq. ft. of floor space. This model carries a commercial rating for general laboratory use. It comes standard with a manual defrost system that allows you to select the appropriate time for the system to be engaged, unlike auto-defrost models that work on a timer sequence. This product utilizes proven technology used in the household appliance industry, but is manufactured to endure the rigors of commercial laboratory use and carries a warranty for this application. For performance assurance, each unit is completely tested and shipped with its unique pull down performance graph. The exterior is constructed of heavy gauge steel with a baked-on white epoxy coating for long lasting durability and scratch resistance. The interior is white, corrosion resistant, molded ABS with no seams for easy cleaning and decontamination. The interior environment is protected by CFC-free, high-density foamed-in-place urethane insulation. This model has an isolated freezing compartment with separate access door. The freezer inventory environment includes one wire shelf plus its floor for product storage. The refrigerator inventory environment includes two main compartment adjustable wire shelves and one solid, fixed-position glass shelf. There are also two lower compartment bins and three shelves on the door for additional storage capacity and flexibility. Other features include reversible outer doors for location flexibility, an internal light in the refrigerator compartment and adjustable leveling legs.

Specifications:

- Temperature Range Refrigerator -2° to 7° C (28.4° to 41° F)
Freezer -25° to -15° C (-7.6° to 23° F)
- Dimensions Exterior 23.5" W(59.69 cm) x 29.6" D(75.18 cm) x 61.3" H(155.7 cm)
Interior 19.4" W(49.28 cm) x 23.5" D(59.69 cm) x 50.1" H(127.25 cm)
- Capacity 11.9 cu. ft. 292.8 liters
- Net weight 160 lbs. 72.6 kg.
- Shipping weight 180 lbs. 81.65 kg.



Typical cycle performance characteristic



Typical load pull down characteristic