

Sci-Cool, Inc.



Model SCGP17OW1AR



Upright Freezer

Sci-Cool's space-saving upright freezer model is ideal for placement beside the work bench, requiring only 5.7 sq. ft. of floor space. This model carries a commercial rating for general laboratory use and comes standard with a manual defrost system that allows you to select the appropriate time for the system to be engaged, unlike auto-defrost models that work on a timer sequence. This product utilizes proven technology used in the household appliance industry, but is manufactured to endure the rigors of commercial laboratory use and carries a warranty for this application. For performance assurance, each unit is completely tested and shipped with its unique pull down performance graph. The exterior is constructed of heavy gauge steel with a baked-on white epoxy coating for long lasting durability and scratch resistance. The interior is white molded ABS with no seams for easy cleaning and decontamination. The interior environment is protected by CFC-free, high-density foamed-in-place urethane insulation. Additional standard features include three fixed refrigerated shelves, a removable wire basket at the floor level for large item storage and five shelves on the door, an interior light, adjustable temperature control, internal floor drain and adjustable leveling legs.

Specifications

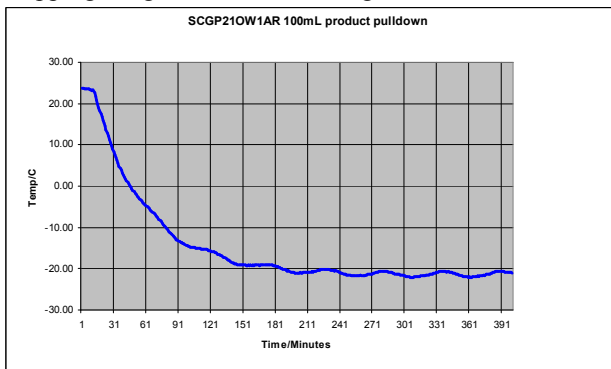
Temperature Range Freezer -20° to -12° C (-4° to 10° F)

Dimensions Exterior 30@ W(76.2 cm) x 30@ D(76.2 cm) x 60@ H(152.4 cm)
Interior 25" W(63.5 cm) x 23.8" D(60.45 cm) x 51" H(129.54 cm)

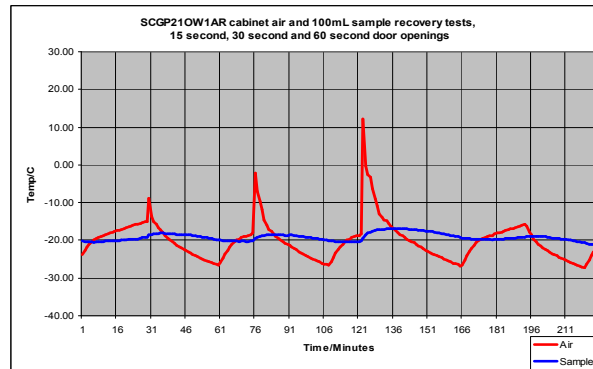
Capacity 16.8 cu. ft. 413.4 liters

Net weight 158 lbs., 71.67 kg

Shipping weight 184 lbs. 83.46 kg



Typical performance ambient pull-down



Typical performance, door opening recovery